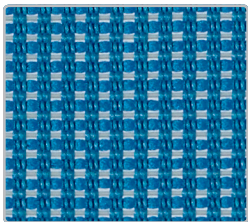
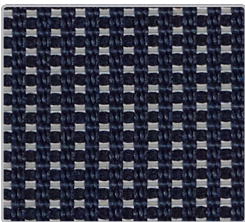


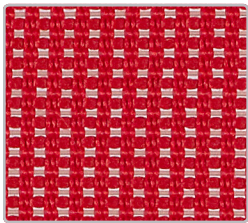
Torsa Mesh



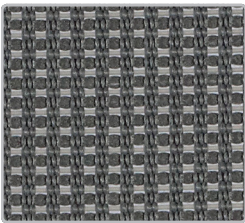
Electric Blue



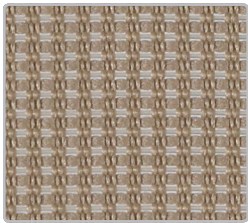
Navy



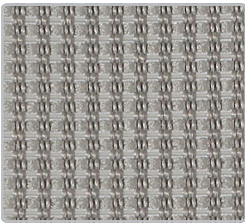
Fire



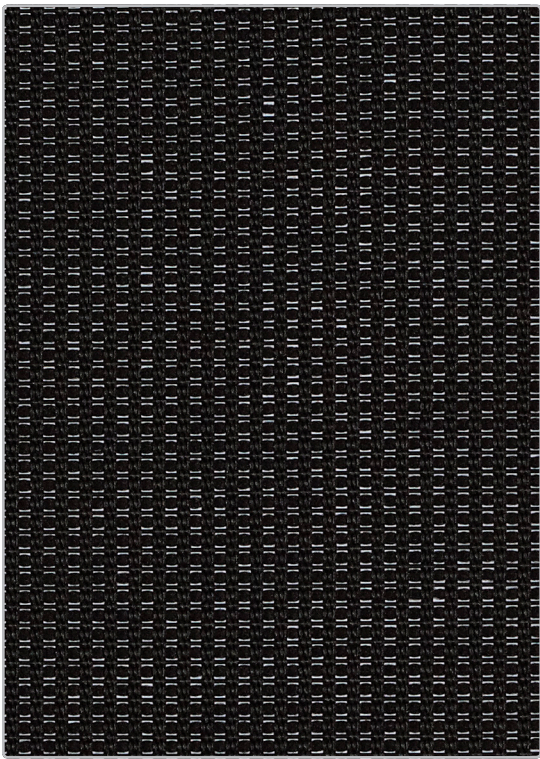
Nickel



Desert



Fog



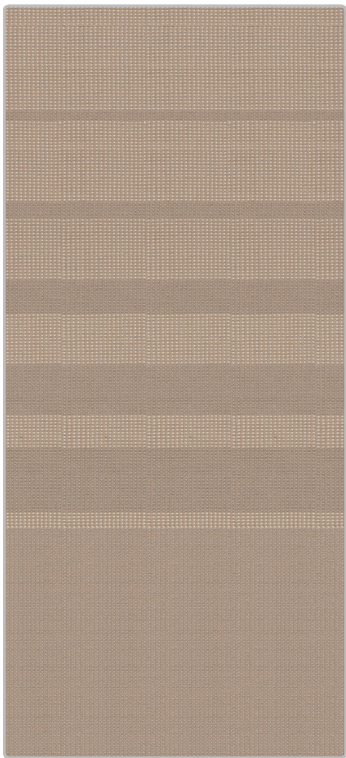
Onyx

Pattern: Torsa Mesh

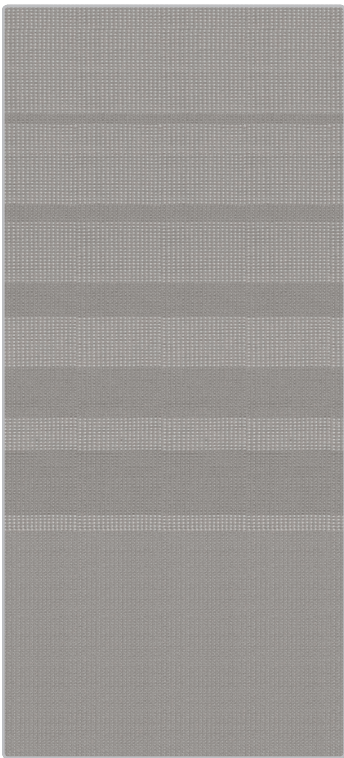
68% Polyester,
32% Poly Elastometric

High Abrasion:
100,000 double rubs

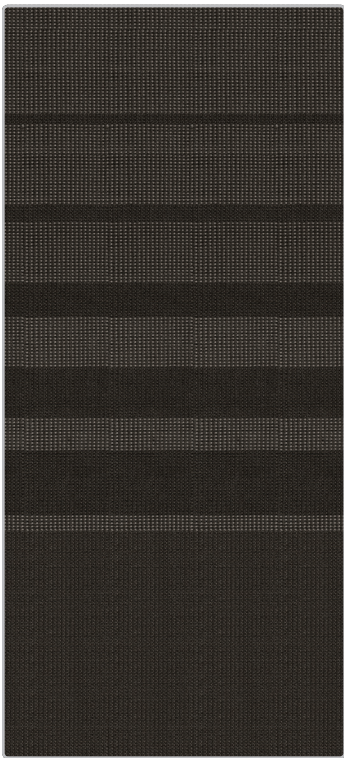
Bleach cleanable **BLEACH**
Cleanable



Desert Stripe




Fog Stripe



Onyx Stripe

Pattern	Torsa Mesh
Content	32% Poly Elastomeric, 68% Polyester
Width	54"
Abrasion	100,000 Double Rubs

Applicable ACT®     

Cleaning Code WS/BC: 10:1
 WS: Water based foam or cleaner
 BC: Bleach Cleanable 10:1 

Samples To order samples, call (888) 274-8664 or visit sitonit.net

icon upholstery definitions



Fire Retardency
 Flammability testing determines a fabric's resistance to burning. Passes Cal 117.



Colorfastness to Wet and Dry Crocking
 The rubbing off of color from fabric onto clothing, hands or other materials and can occur under wet or dry conditions. Passes AATCC 8-1974 Dry Crocking. Class 4 minimum, Wet Crocking. Class 3 minimum.



Colorfastness to Light
 The degree to which fabric will retain its color when exposed to light. Passes AATCC 16A-1974 or AATCC 16E-1976. Class 4 minimum at 40 hours
 Note: Class 4 minimum at 60 hours is recommended for direct sunlight exposure.



Physical Properties
 Brush Pill Test to determine a fabric's pilling, Breaking/Tensile Strength Test determines the ability of a fabric to withstand tension without breaking or tearing. Seam Slippage Test determines the pulling apart of fabrics at the seams. Passes Brush Pill ASTM D3511, 3-4 minimum, Breaking Strength ASTM D3597-D1682-64 (1975) 50 lbs. minimum in warp & weft, Seam Slippage ASTM D3597-D434-75 25 lbs. minimum in warp & weft.



Abrasion
 The ability of a fabric to withstand damage from wear and rubbing. Passes Heavy Duty Contract ASTM 3597 modified (No.10 cotton duck); 30,000 double rubs Wyzenbeek Method or ASTM 4966 modified (with 21 oz. wt.); 40,000 rubs Martindale Method.

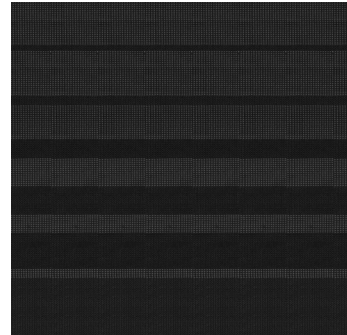
SitOnIt • Seating®

(888) 274-8664

(714) 995-4855 Fax

sitonit.net

sales@sitonit.net



Showroom Locations

Los Angeles

6415 Katella Avenue
 Cypress, CA 90630

Chicago

222 Merchandise Mart Plaza
 Suite 1150
 Chicago, IL 60654

New York City

11 East 26th
 New York, NY 10010